

## FTP SERVER: LOG-IN PROCEDURE FOR OUTSIDE SOURCE INTERLINK USERS

FTP: Abbreviation of File Transfer Protocol, the protocol used on the Internet for sending files.

### Login

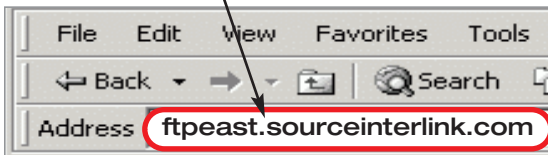
#### Login Instructions:

**PC** users can use Internet Explorer for all FTP functions.

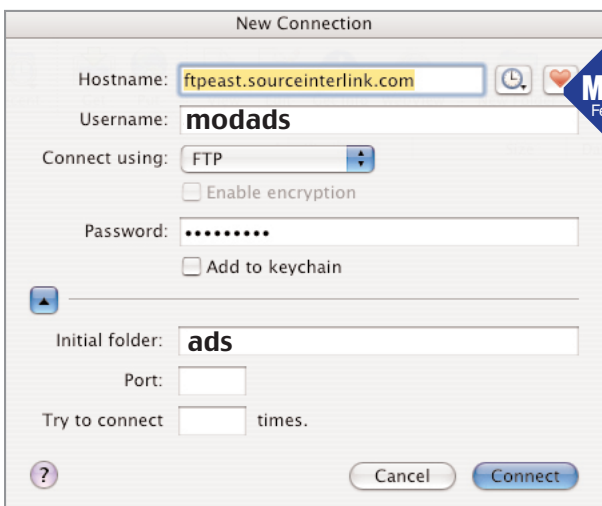
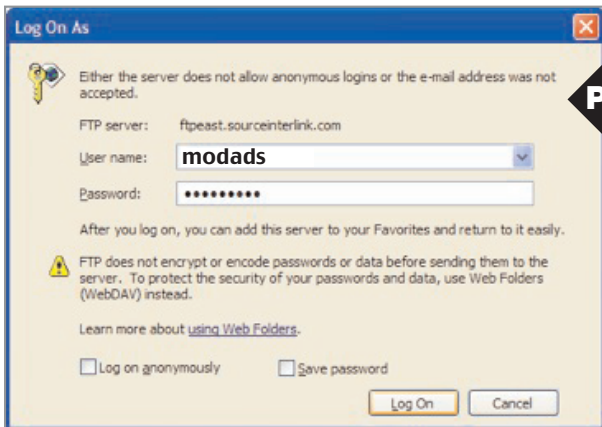
**Mac** users should use a dedicated FTP application like Fetch.

(\*Please Note: on a Mac, one cannot upload using Internet Explorer, only download). An error message pops up. Click **OK**.

Address: [ftpeast.sourceinterlink.com](ftp://ftpeast.sourceinterlink.com)



Your *User Name* and *Password* will be unique to your particular magazine. Please see to the right for the appropriate log-ins for your magazine.



If your ad is for **Modified**:

Type in your login name as **modads** and password as **modads**.

If your ad is for **Modified Luxury & Exotics**:

Type in your login name as **mleads** and password as **mleads**

If your ad is for **Modified Mustangs**:

Type in your login name as **musads** and password as **musads**

After logging in, Take your file and drag it on to the window and drop it into the folder.

Please label your file with your company name & place it in the appropriate folder.

**\*\*Please do not name your file "modified."\*\***